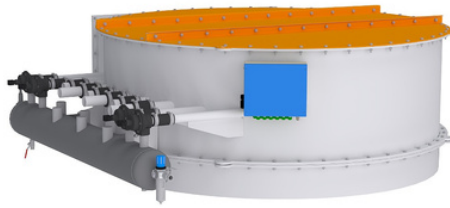


Cyclo-f™



Solid particles are thrown against the cyclone walls by centrifugal force, where they settle and collect at the bottom of the equipment.
Requires less maintenance compared to other filters as it has no moving parts.
Handles large volumes of gas flows with high speed and efficiency.

Typically ranges from 70% to 95%, depending on particle size and gas flow speed.

Varies from a few cubic meters per hour to several thousand cubic meters per hour.

Often made from stainless steel, aluminum, or other corrosion-resistant materials, allowing operation in aggressive environments.

Effectively removes particles sized 5 microns and larger.

Typically ranges from 100-200 Pa, depending on design and operating conditions.

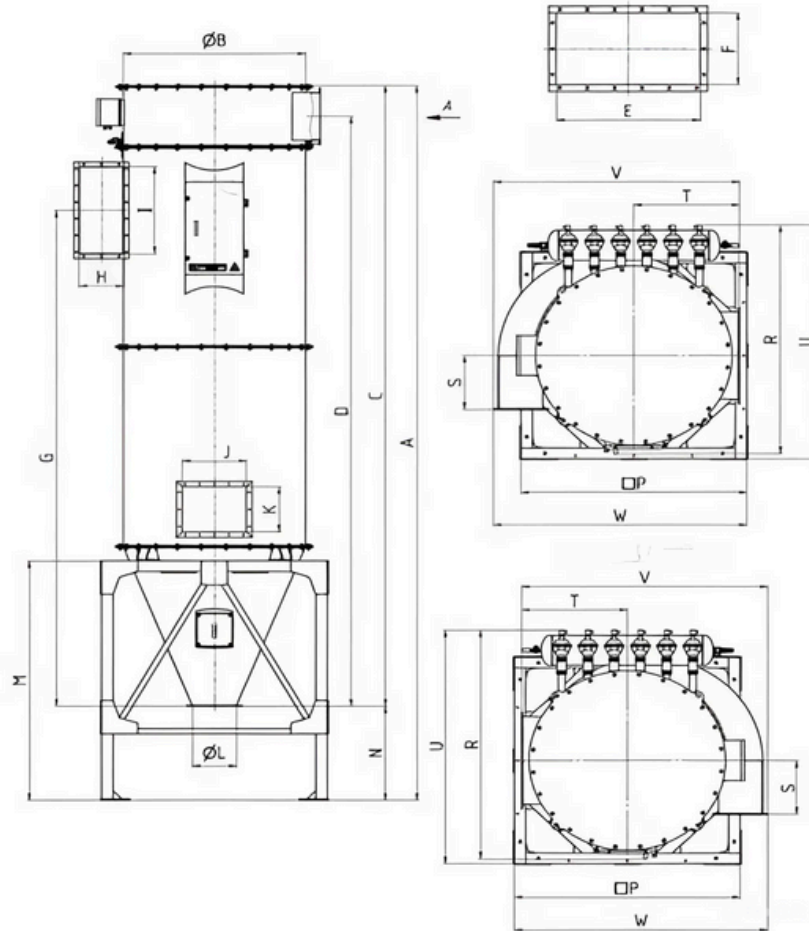
Serve as an additional barrier for particles not removed in the first stage.

Purified gas flow causes less wear on downstream equipment, extending its service life and reducing maintenance costs.

Additional filters reduce the accumulation of particles on the cyclone walls, lowering the risk of clogging and the need for frequent cleaning.

Internal filters stabilize cyclone operation, ensuring consistent cleaning regardless of fluctuations in incoming particle flow.

The inlet swirl separates particles. Large particles settle; fine dust reaches the filter. Clean air enters the chamber, and dust collects on sleeves. Pneumatic pulses clean the sleeves by timing or pressure drop.



Model of the filter	Performance, m ³ /h	Filter area, m ²	A	ØB	E	F	H	I	J	K	ØL	N	P	U	W
Cyclo-f-21.20	4500-5500	18,8	4750	1100	500	300	250	400	440	340	300	910	1560	1675	1620
Cyclo-f-21.25	5500-7000	23,4	5250	1100	500	300	250	400	440	340	300	910	1560	1675	1620
Cyclo-f-21.30	7000-8500	28	5750	1100	500	300	250	400	440	340	300	910	1560	1675	1620
Cyclo-f-28.25	8500-10000	35,7	5400	1250	650	350	300	650	440	340	300	710	1560	1780	1745
Cyclo-f-28.30	10000-12000	42,9	5900	1250	650	350	300	650	440	340	300	710	1560	1780	1745
Cyclo-f-44.25	12000-14500	49	6345	1600	1000	400	450	850	920	586	300	1110	2010	2170	2300
Cyclo-f-44.30	14500-17000	58,9	6845	1600	1000	400	450	850	920	586	300	1110	2010	2170	2300
Cyclo-f-44.35	17000-20000	68,7	7345	1600	1000	400	450	850	920	586	300	1110	2010	2170	2300
Cyclo-f-52.35	20000-25000	81,7	7395	1700	1100	450	450	1000	920	586	300	1010	2010	2215	2350
Cyclo-f-68.35	25000-30000	106,2	8100	1920	1250	550	550	1150	920	586	300	1210	2500	2570	2800
Cyclo-f-84.35	30000-36000	131,2	8100	2120	1350	550	550	1250	920	920	300	910	2500	2670	2900
Cyclo-f-112.30	36000-42000	147,2	7700	2350	1450	650	600	1350	920	920	300	1210	3750	3410	3690
Cyclo-f-112.35	42000-50000	174,9	8200	2350	1450	650	600	1350	920	920	300	710	3750	3410	3690