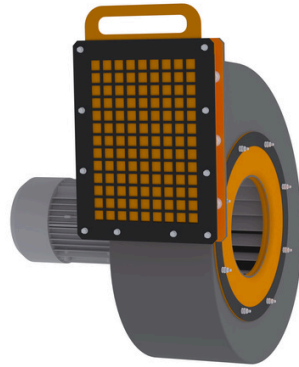
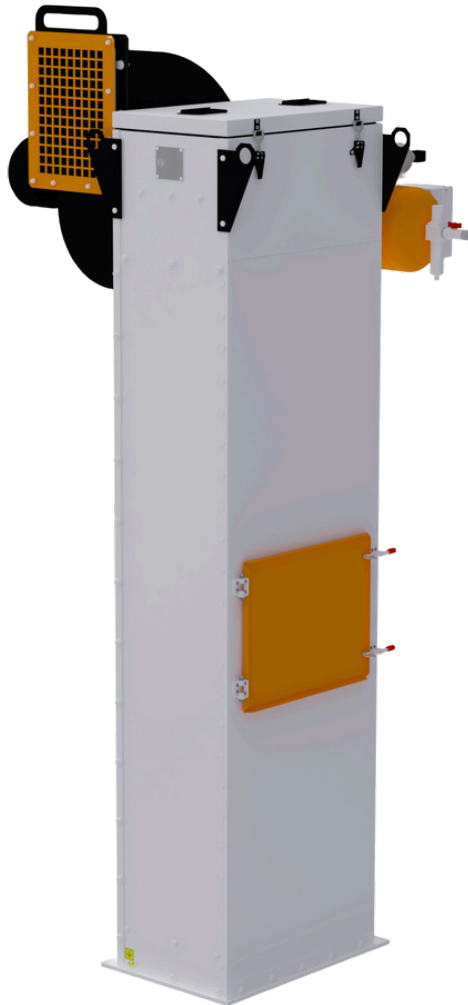


Uni-f™



A balanced regeneration system extends the lifespan of sleeves by 2 times compared to existing analogues. Application of filtration materials from Remarkable and DONALDSON companies. Highly intelligent control system for installation parameters ensures complete autonomous operation and eliminates human intervention.

The use of fans with minimal noise and vibration characteristics allows for the application of installations in enclosed spaces without the need for additional noise absorption systems.

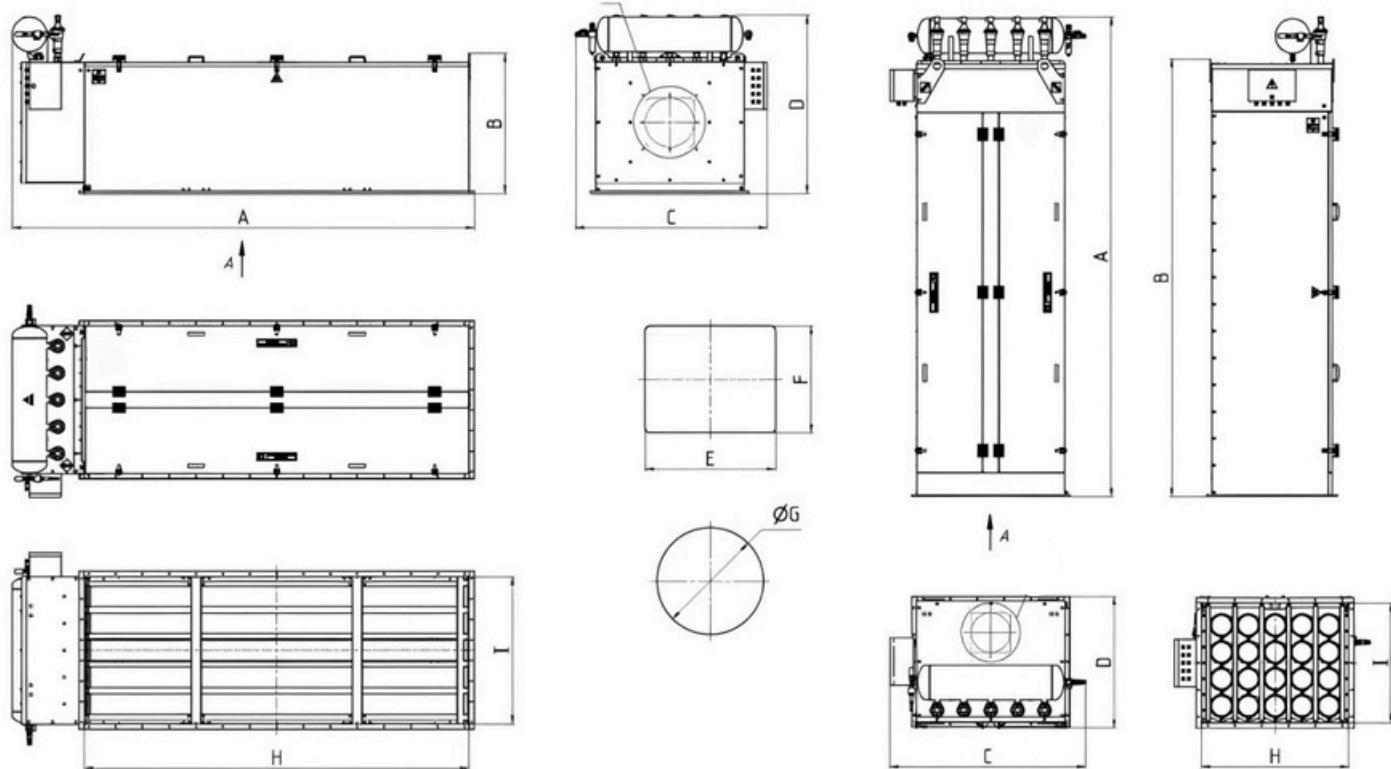
The fans used have an increased efficiency compared to analogues by more than 20% due to the special angle of attack of the impeller blades, which allows achieving the specified performance and pressure parameters with lower electricity consumption.

Possibility of manufacturing the installation in explosion-proof and spark-proof designs.

Possibility of designing the installation to operate at high temperatures in the range of 150-200 degrees Celsius.

Possibility of designing the installation to work with food products and with dusts of aggressive substances.

In the equipment, dusty air is filtered through a chamber. Dust particles settle on filter elements, while purified air is released through an exhaust fan. A self-cleaning system returns accumulated dust to the product.



Model of the filter	Performance, m ³ /h	Filter area, m ²	A	B	C	D	E	F	ØG	H	I	Weight without rotor, kg
Uni-f-6	500-1000	3,5	1855		1030	730	-	-	200	580	415	160
Uni-f-6			1920	543	1030	585				1570	590	
Uni-f-9	1000-1700	6,7	2260		1100	945	-	-	230	585	585	215
Uni-f-9			2320	715	1020	755				1970	590	
Uni-f-12	1700-3250	11,3	2755		1270	945	-	-	255	755	585	280
Uni-f-12			2755	715	1270	755				2455	760	
Uni-f-20	3250-5000	18,9	3020	2765	1240	835	310	310	-	930	755	385
Uni-f-20			2930	885	1215	1130				2435	930	
Uni-f-28	5000-7000	26,4	2995	2895	1490	1150	400	400	-	1270	755	480
Uni-f-28			2930	885	1560	1130				2435	1270	
Uni-f-40	7000-10000	37,7	2895	2895	2000	1090	600	600	-	1780	755	645
Uni-f-40			2915	1490		1130				2435	1780	