



FORGED CHAINS

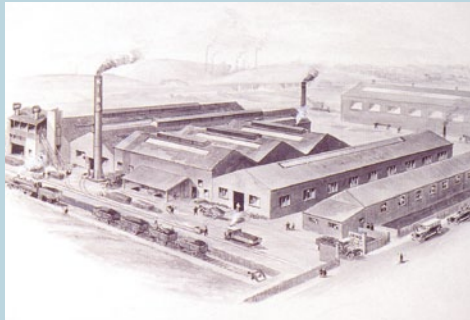



Linking you to EXCELLENCE since 1926

JOHN KING



JOHN KING & COMPANY



Climax Works 1930's



Chain Assembly 1960's



New Climax Works 2000's

Company History and Qualifications

The John King Company was established in Leeds, England in 1926. Early success was achieved in the manufacture of mechanical handling equipment for the rapid mechanisation of the coal industry. In these early days conveyor chain was generally of cast link construction. The Company therefore has unrivalled experience in the production of highest quality cast link chains in ductile irons and steel under the "Climax Quality Brand". JOHN KING are undoubtedly the world leaders in this range of conveying chains.

Although cast link chains remain an important part of the JOHN KING programme, the company has progressively expanded the product range to encompass chains of other constructions and manufacturing techniques including Welded steel chains, engineered steel chains, forged fork link chains and Engineering plastic chains. Today JOHN KING offer the widest range of conveyor chains of any manufacturer which makes them unique in being able to offer an infinite number of chain types in a variety of materials and constructions for a multiplicity of industry mechanical handling applications.

In recent years it has been JOHN KING's strategy to develop the Company into a global business. This has seen the establishment, in addition to the United Kingdom, of a chain production plant in the US. John King USA Inc from their plant in East Peoria (IL) are well equipped with the manufacturing equipment for component production and assembly processes for high quality chain production serving North and South America. To provide best service in export markets the companies has warehousing and distribution worldwide and maintain ambition plans to expand the network further in the future.

All products are manufactured within the dictates of the Company's quality management according to ISO 9000 establishing consistent and high quality products and ensuring performance reliability and extended service life.

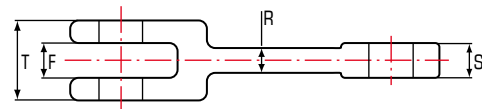
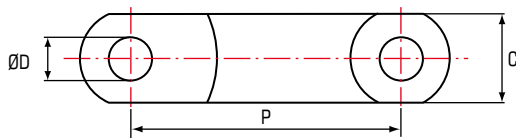
CONTENTS

Forged Link Standard Series **03** | Forged Link Double Series **04** | Forged Link Triple Series **05** | Typical Flight Arrangements **05** | Plastic Sleeves for Standard Forged Chains **06** | High Manganese Wear Rail **06** | Engineering Plastic Flight with Unique Mounting Arrangement (Patent Pending) **06** | Segmental Sprockets & Hubs **07**



Forged Link Standard Series

This series represents the leading product within the John King programme. Forged fork link chain has proven to be one of the most reliable conveying mediums offering a combination of versatility, strength and abrasion resistance. These chains, originally of European origin, are now established worldwide. With a wide variety of materials, heat treatments and flight formats the chain is proven in both drag and enmasse handling.



Forged Link Standard Series

Chain Number	P	T	C	S	F	R	Bolt Hole Diameter D	Breaking Loads			Weight kg/m
								TN*	CN*	CD*	
JKF 10160	101.6	24	36	8	10	6	14	110	120	210	3.50
JKF 10160R	101.6	30	36	13	14	9	14	180	195	330	4.80
JKF 12514	125	30	36	13	14	10	16	163	175	290	4.40
JKF 14214	142	30	40	13	14	9	18	180	195	330	4.90
JKF 14218	142	42	50	19	20	11	25	290	320	550	9.40
JKF 14222	142	54	50	25	27	16	25	370	400	655	12.20
JKF 14226	142	62	50	28	30	15	25	440	470	790	13.60
JKF 16018	160	46	46	22	24	15	22	320	342	560	9.30
JKF 16025	160	50	53	23	25	13	25	370	400	655	10.80
JKF 20025	200	60	50	25	27	18	25	380	410	670	11.30
JKF 20028	200	66	60	30	32	20	30	500	540	900	16.70
JKF 21640	216	64	72	26	28	20	35	585	630	1035	20.10
JKF 22040	220	64	72	26	28	20	35	585	630	1035	20.30
JKF 22050	220	58	75	28	30	25	32	710	760	1260	19.10
JKF 22060	220	71	75	31	33	21	35	735	790	1300	22.90
JKF 25040	250	70	75	32	34	18	32	735	860	1430	18.80
JKF 26035	260	65	75	31	33	20	32	840	900	1480	19.80
JKF 26040	260	70	75	31	33	20	32	840	900	1480	21.00
JKF 26045	260	78	75	35	37	20	32	930	1000	1650	21.80

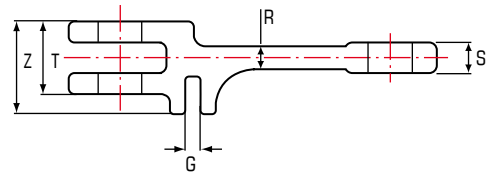
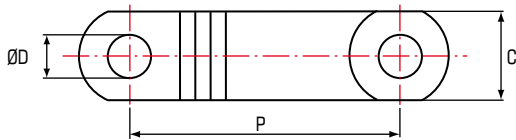
* TN – Manganese Chrome Alloy Steel (20MnCr5) Case hardened
 CN – Chrome Nickel Alloy Steel (18NiCoMo5) Case Hardened
 CD – Chrome Moly Alloy Steel (42CrMo4) Hardened & Tempered

Forged Chains



Forged Link Double Series

For double strand assemblies John King have a range of links following the standard format but with a forged "double clevis" into which a scraper can be mounted. The flight blade can be retained by either a U bolt or standard fasteners. The chain allows for some built in clearance between strands which obviates any potential problems that may be associated with mismatch. Double strand allows for improved discharge particularly relevant in conveying sticky materials.



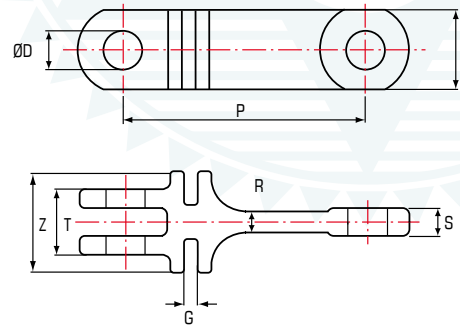
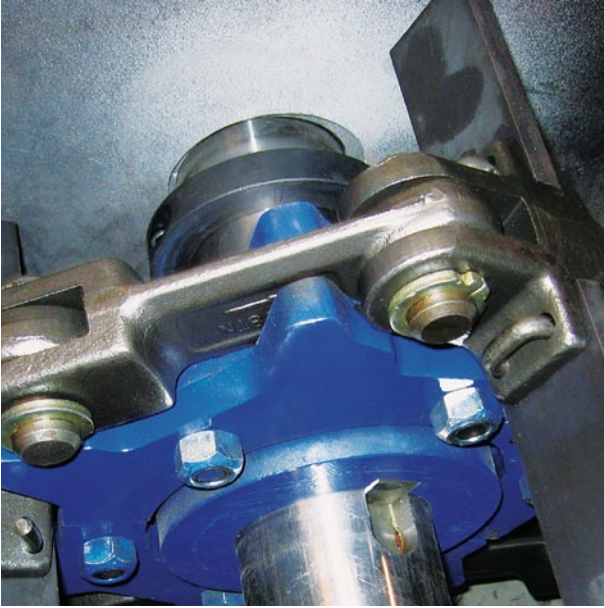
Forged Link Double Series

Chain Number	P	T	C	S	Z	G	Bolt Hole Diameter D	Breaking Loads			Weight kg/m
								TN	CN	CD	
mm											
JKF 142182	142	42	50	19	70	13	25	290	320	550	11.80
JKF 142262	142	62	50	28	87	13	25	440	470	790	16.70
JKF 160252	160	50	53	23	82	13	25	370	400	655	13.60
JKF 175402	175	72	60	30	95	16	30	540	580	955	20.30
JKF 200252	200	60	50	25	81	12	25	380	410	670	13.00
JKF 200402	200	70	60	30	95	13	30	540	580	955	19.30
JKF 250252	250	60	50	25	81	12	25	380	410	670	12.00
JKF 250402	250	70	60	30	95	13	30	540	580	955	17.70
JKF 250602	250	100	70	45	140	21	35	975	1050	1720	35.20

* Attachment hole positions and sizes can be varied to meet customer requirements. Dimensions in metric measure.

Forged Link Triple Series

Where extra wide flights are required the John King triple link is available allowing, in conjunction with the double on perimeters, three chain strands up to 3100 mm overall. In addition the "Double slot" allows for a versatile means of flight retention for both steel & plastic options. Retention can be either U clips or standard fasteners.

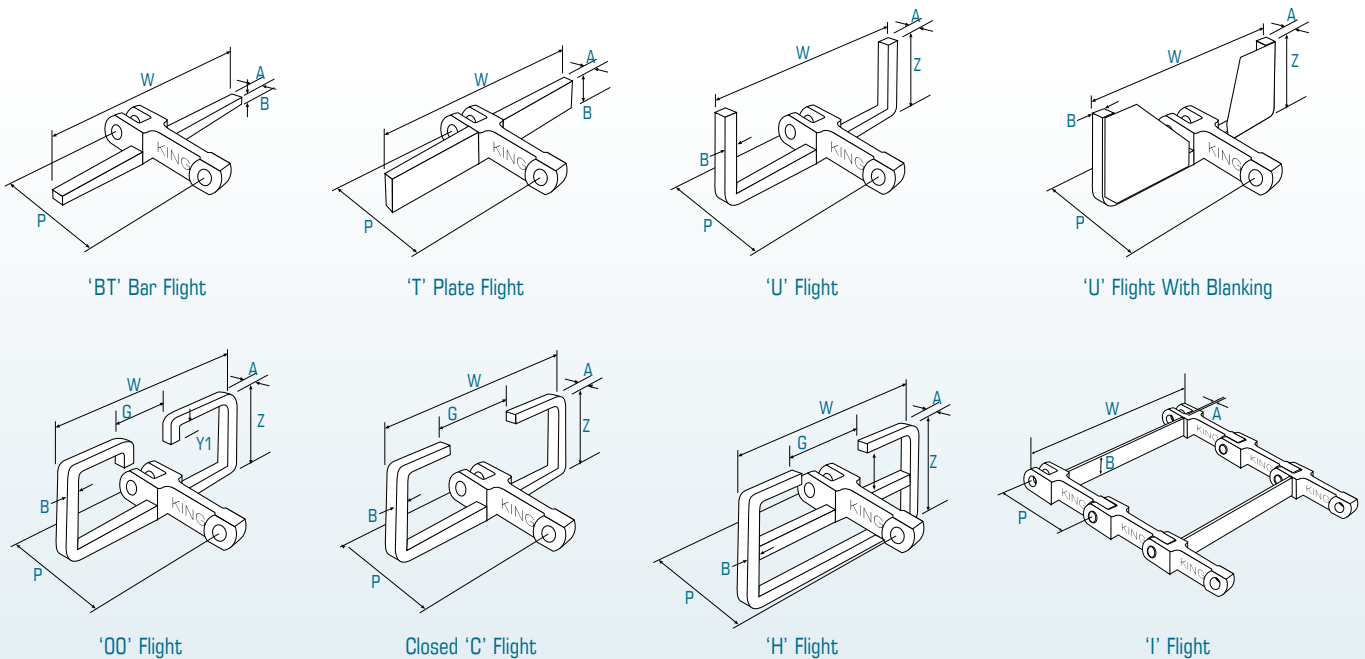


Forged Link Triple Series

Chain Number	P	T	C	S	Z	G	Bolt Hole Diameter	Breaking Loads			Weight
							D	TN	CN	CD	
	mm							kN			
JKF 142183	142	42	50	19	92	13	25	290	320	550	14.20
JKF 142263	142	62	50	28	112.3	13	25	440	470	790	19.80

* Attachment hole positions and sizes can be varied to meet customer requirements. Dimensions in metric measure.

Typical Flight Arrangements



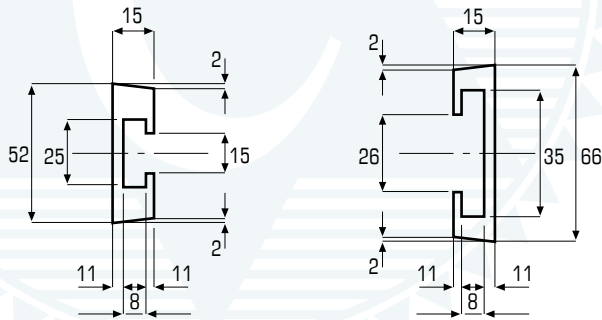
Forged Chains

Plastic Sleeves for Standard Forged Chains

Flight Material

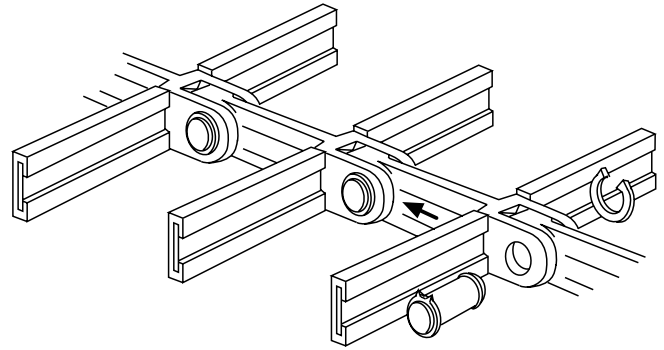
- Extruded UHMW Polyethylene.

All measurements in mm.

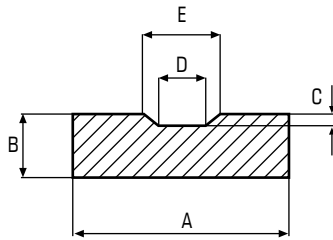


10160
10160R

14218
14226



High Manganese Wear Rail



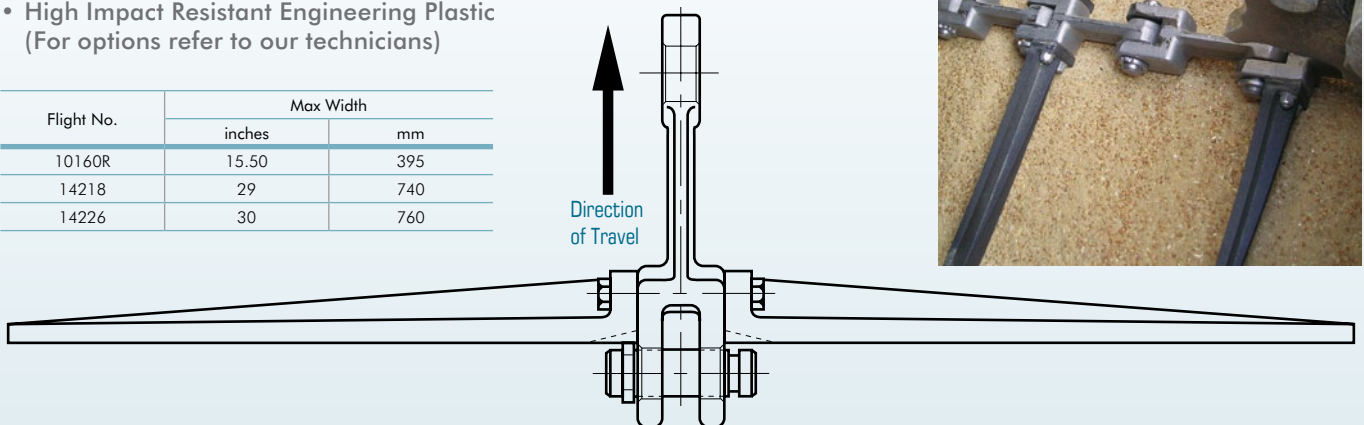
	A	B	C	D	E	Weight
	mm					
49/4010	40.0	10.0	2.0	5.0	12.0	3.01
49/5010	50.0	10.0	2.0	5.0	12.0	3.82
49/6010	60.0	10.0	3.0	6.0	16.4	4.45
49/6012	60.0	12.0	2.5	12.0	14.0	5.50
49/6020	60.0	20.0	3.0	6.0	16.4	9.15

Engineering Plastic Flight – TUFFLEX® with Unique Mounting Arrangement (Patent Pending)

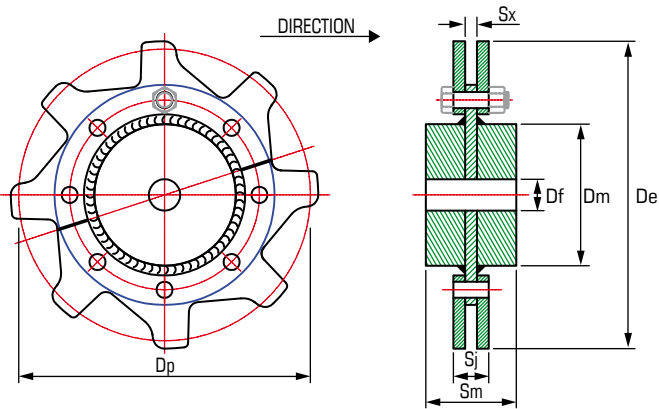
Flight Material

- High Impact Resistant Engineering Plastic
(For options refer to our technicians)

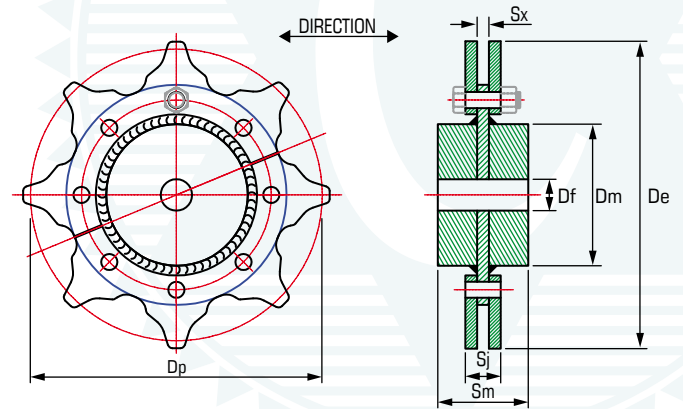
Flight No.	Max Width	
	inches	mm
10160R	15.50	395
14218	29	740
14226	30	760



Segmental Sprockets & Hubs



Standard Asymmetrical Pattern



Reversible Pattern

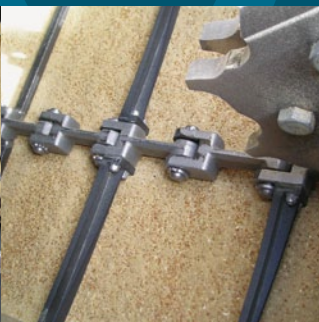
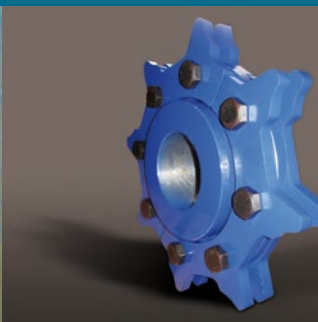
Segmental Sprockets & Hubs

JK code	No of Teeth	Dp	De	Df	Dm max	Sj	Sx	Sm
10160	6	203.20	216	25	80	34	10	90
	8	265.49	277	30	120	34	10	90
	10	328.78	340	40	160	34	10	110
	12	392.55	404	50	180	34	10	115
	14	456.58	468	50	200	34	10	140
	10160R*	6	203.20	216	25	80	36*	12*
10160R*	8	265.49	277	30	120	36*	12*	90
	10	328.78	340	40	160	36*	12*	110
	12	392.55	404	50	180	36*	12*	115
	14	456.58	468	50	200	36*	12*	140
	6	284.00	304	30	80	36	12	90
	8	371.06	390	40	120	36	12	90
14214	10	459.52	480	40	160	36	12	110
	12	548.65	570	40	200	36	12	115
	6	284.00	304	40	120	45	15	95
14218	7	327.31	344	40	150	45	15	100
	8	371.06	390	40	180	45	15	115
	9	415.18	435	40	220	45	15	140
	10	459.52	480	40	220	45	15	140
	11	504.02	524	40	290	45	15	240
	12	548.64	570	40	290	45	15	240
	13	593.37	614	40	350	45	15	300
	14	638.15	660	40	350	45	15	300
	15	682.87	702	40	350	45	15	300
	16	727.90	748	40	350	45	15	300
14222	6	284.00	304	40	120	60	20	110
	8	371.06	390	40	180	60	20	110
	10	459.52	480	40	240	60	20	110
14226	6	284.00	304	40	120	60	20	105
	7	327.31	344	40	150	60	20	110
	8	371.06	390	40	180	60	20	115
	9	415.18	435	40	220	60	20	140
	10	459.52	480	40	220	60	20	140
	11	504.02	524	40	290	60	20	240
	12	548.64	570	40	290	60	20	240
	13	593.37	614	40	350	60	20	300
	14	638.15	660	40	350	60	20	300
	15	682.87	702	40	350	60	20	300
21640	16	727.90	748	40	240	60	20	300
	6	432.80	459	40	170	65	25	105
	7	498.75	525	40	170	65	25	105
	8	565.48	592	40	280	65	25	230
	9	632.71	659	40	350	65	25	300
	10	700.29	726	40	350	65	25	300
16025	6	320.00	342	40	150	65	25	105
	8	418.10	440	40	170	65	25	105
	10	517.77	540	40	300	65	25	250
20028	8	522.40	546	60	280	65	25	230
	10	647.40	672	60	350	65	25	300
	12	772.80	797	60	350	65	25	300
	8	679.41	709	60	350	82	32	300
26040	10	841.37	870	60	400	82	31	340
	12	1004.56	1035	60	500	82	32	400

John King have standard bolt hole detail. Bolt detail may however vary and it is recommended the buyer consults our technical department for clarification



JOHN KING



John King Chains Limited
New Climax Works,
Lancaster Business Park,
Sherburn-in-Elmet LS25 6NS UK
Tel: (44) 1977 681 910
Fax: (44) 1977 681 899
Email: general@johnkingchains.co.uk

John King Chains (SA) (PTY) Ltd.
No. 17 N12 Airport Industrial Park,
Dr. Vosloo Road, Barletts, Boksburg,
Johannesburg
Tel: (27) 11 894 3570
Fax: (27) 11 894 3501
Email: sales@jkc.co.za

**John King Chains
(Central Europe)**
ul. Grunwaldzka 182
85-401 Bydgoszcz, Poland
Tel/Fax: (48) 52 349 08 97
Mobile (48) 600 871 077
Email: aw@johnkingchains.com

John King USA Inc.
200 Catherine Street, Unit 7, Box 8,
East Peoria, USA IL 61611
Tel: (1) 309 698 9250
Fax: (1) 309 698 9259
Email: sales@johnkingchains.com

Cadenas John King Ltda.
Panamericana 5 Sur Km. 34
Parcela 13 – Lote C
Buin – Santiago, Chile
Fonos: (56) 2517 7313
Email: manuel@johnkingchains.com



REG NO: FM77342

www.johnkingchains.com